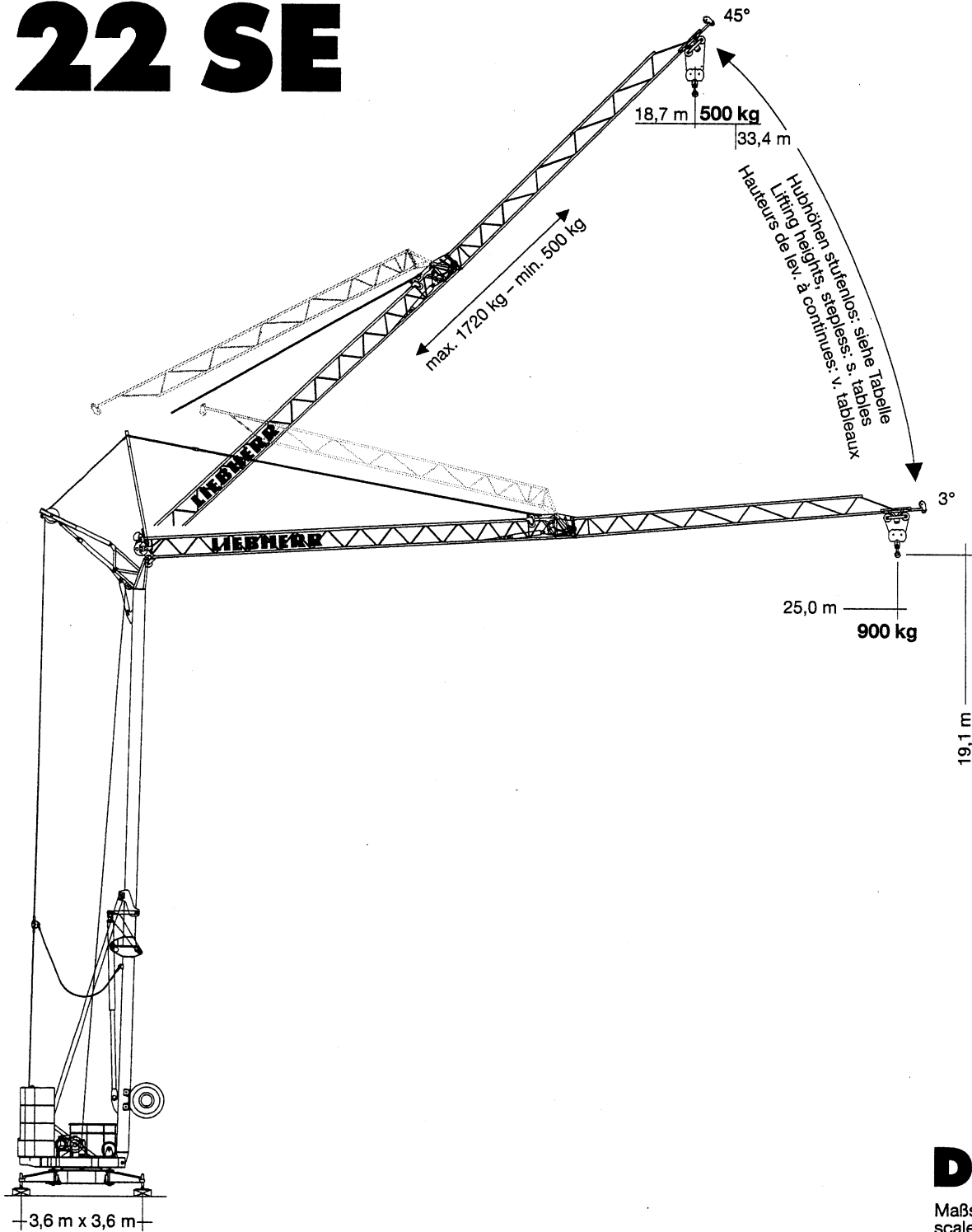


**Tower Crane
Grue à tour**

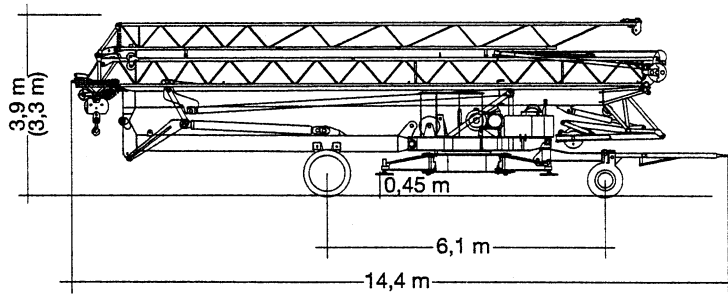
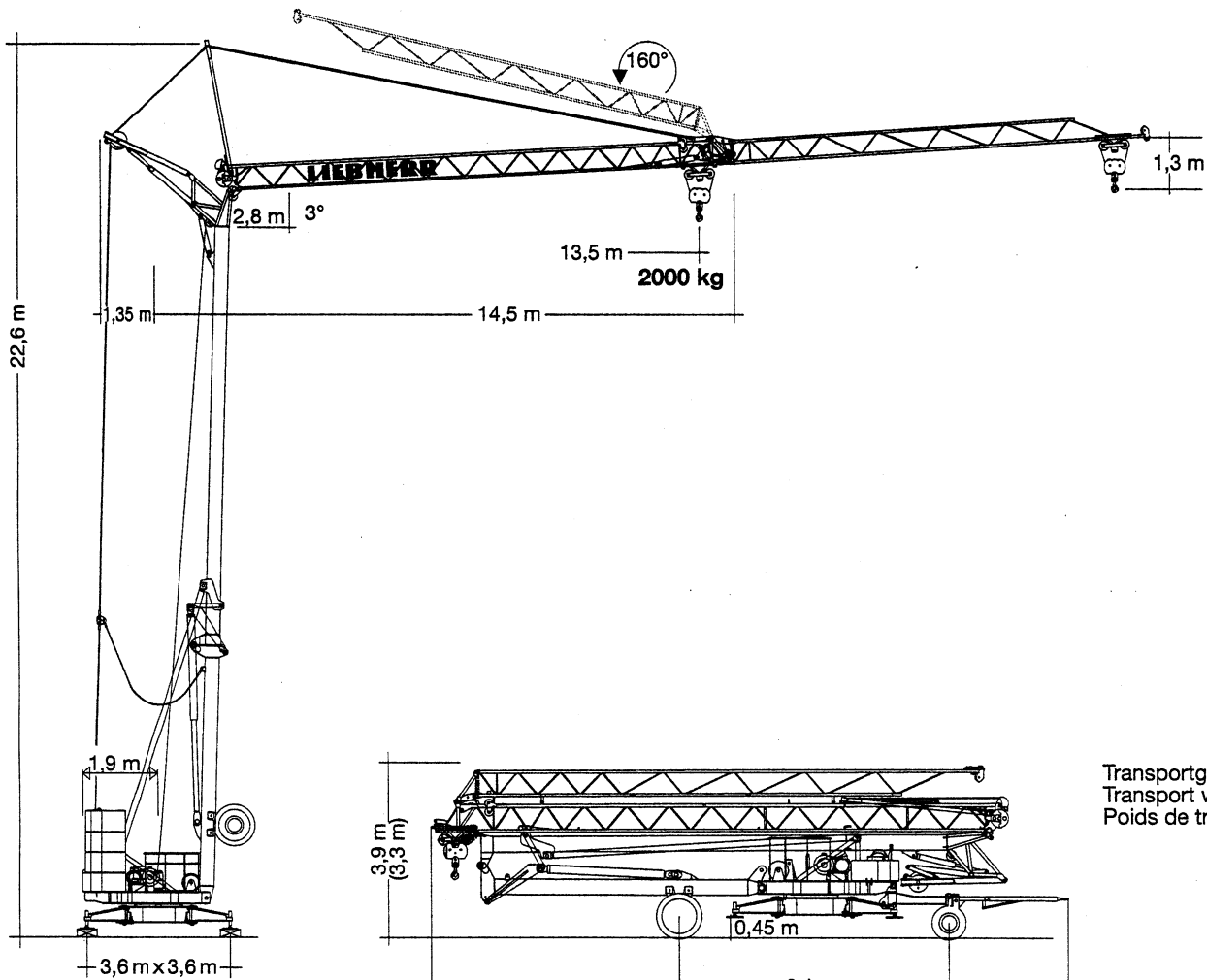
Turmdrehkran 22 SE



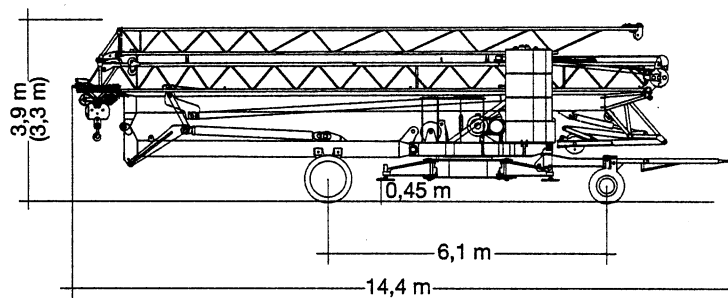
DIN/FEM

Maßstab 1 : 185
scale / échelle

LIEBHERR



Transportgewicht ca. 17550 kg
 Transport weight approx.
 Poids de transport env.



Transportgewicht ca. 22800 kg
 Transport weight approx.
 Poids de transport env.

Gewicht

Weight

Poids

Gegengewicht Counterweight Contrepoids	r = 1,9 m	11750 kg	Konstruktionsgewicht ca. Dead weight approx. Poids de la construction env.	9000 kg
--	-----------	----------	--	---------

22 SE

Ausladung und Tragfähigkeit

Radius and capacity

Portée et charge

Auslegerlänge Length of jib Longueur de flèche m	max. kg m / kg	m/kg																
		9,0	10,0	11,0	12,0	13,0	14,0	15,0	16,0	17,0	18,0	19,0	20,0	21,0	22,0	23,0	24,0	25,0
25,0	2,8-12,2 2000	2000	2000	2000	2000	1845	1680	1540	1415	1310	1220	1140	1065	1000	945	900	900	900

Auslegersteilstellung

Steep angle positions





En position relevée

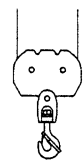
	① Hakenhöhe (m) hoisting height Hauteur sous crochet	② Ausladung (m) radius Portée	③ Tragfähigkeit (kg) Capacity Charge	(Zwischenwerte siehe Betriebsanweisung) (Values in between see instruction manual) (Valeurs intermédiaires voir manues d'instructions)																				
				10°	15°	20°	25°	30°	35°	40°	45°													
25,0	21,6	2,7-11,8 -24,7	-1720-650	23,5	2,7-15,3 -24,3	-1270-700	25,4	2,7-19,1 -23,6	-1000-750	27,2	2,6-22,9	820	29,0	2,6-21,9	700	30,7	2,6-20,9	600	32,3	2,5-19,6	530	33,4	2,5-18,8	500

Geschwindigkeiten

Speeds

Vitesses

	U/min 0 ↔ 0,9 sl./min tr./min	1,5 kW, EDC
	18,0 / 36,0 m/min	0,95 / 1,4 kW 1,9 / 2,8 kW *
	ca. 160°/min.	4,0 kW
	ca. 10°/min.	4,0 kW

Hubwerk Hoist unit Mécanisme de levage	Stufe Step Cran	kg	m/min
	1	2000	5,0
	2	2000	20,0
	3	1000	40,0

* Ausführung mit Auslegersteilstellung / Version with steep-angle jib position /
Version avec flèche relevée

Leitungsquerschnitt bei 380 V bis 68,0 m 4 x 6 mm²
Cross section of cable up to
Section de câble à jusqu'à

Betriebsspannung 380 V
Operating voltage
Tension de service

Frequenz 50 Hz
Frequency
Fréquence

Anschlußwert
Power requirement
Puissance requise

16,0 kVA

Technische Kenngröße nach BGL

Technical nominal size according to the construction machinery list (BGL)
Grandeur caractéristique suivant le barème d'emploi des appareils (BGL)



2105-0022

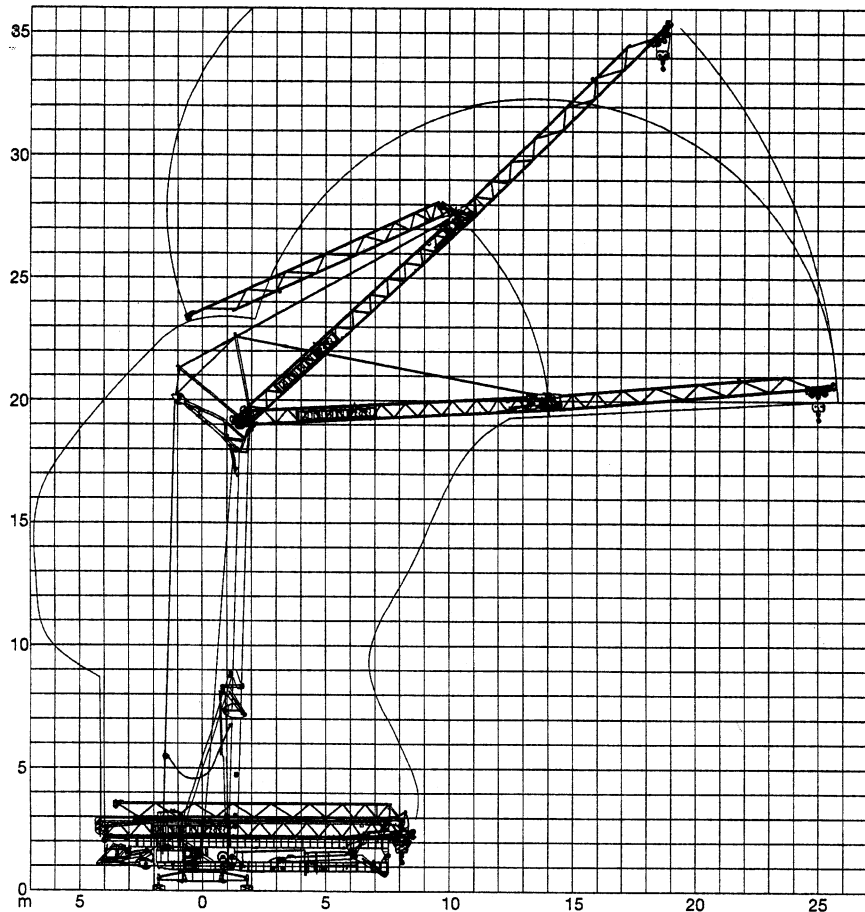
Technische Daten - Technical data

Caractéristiques techniques

Aufstellvorgang

Erection procedure


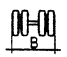

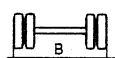

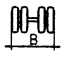

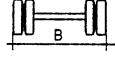
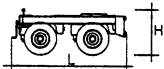
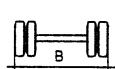
Déroulement de montage



Kolli-Liste

Packing List

Liste de colisage

Pos.	Anz.	Item	Qty.	Rep.	Q'té		L (m)	B (m)	H (m)	kg
1	1	Transportachse vorne, 22 SE-Adapter Road transport axle front, 22 SE adapter Essieux de transport avant, pièce d'adapt. 22 SE	Tra 100 KY 2 Tra 100 KY 6			4,30	1,25	1,31	750	
						4,30	1,25	1,31	850	
2	1	Transportachse hinten, 22 SE-Adapter Road transport axle behind, 22 SE adapter Essieux de transport arrière, pièce d'adapt. 22 SE	Tra 120 GY 1 und/and/et GY 1 A			1,60	2,50	1,20	1000	
3	1	Transportachse vorne m. Zwischenadapter Road transport axle front w. adapter Essieux de transport avant a. pièce d'adapt.	Tra 100 KY 2 Tra 100 KY 6			4,30	1,25	1,31	950	
						4,30	1,25	1,31	1050	
4	1	Transportachse hinten m. Zwischenadapter Road transport axle behind w. adapter Essieux de transport arrière a. pièce d'adapt.	Tra 120 GY 1 und/and/et GY 1 A			1,75	2,50	1,25	1200	
5	1	Transportachse Road transport axle Essieux de transport	Tra 200 GZ 1			3,10	2,50	1,40	2700	

Datenblatt Nr. 120 P - 3880 H1 B3 DIN 15018 • BGL 2105-0022 /
FEM (Section 1) Krangruppe A3 und OENORM T3 • 01.98

Data sheet

Feuille de caractéristiques

Konstruktionsänderungen vorbehalten!
Subject to alterations!
Sous réserves de modifications!

Printed in Germany.

Nehmen Sie Kontakt auf mit

Please contact

Mettez-vous en rapport avec

LIEBHERR-WERK BIBERACH GMBH, Postfach 1663, D-88396 Biberach an der Riß

☎ (0 73 51) 41-0, Fax (0 73 51) 4 12 25